



DELTA

COATINGS INTERNATIONAL

P R O D U C T B R O C H U R E

Fast Curing Liquid Applied Coatings



Polyurea • Polyaspartic • Polyurethane



Contents

• Introduction	03
• Hot Spray Polyurea Technology	
• DELTAShield HP 400	04
• DELTAShield Hybrid 500	05
• DELTAShield HP 500 PW	06
• DELTAShield Aqualine AL	07
• DELTAShield PC 1200	08
• DELTAShield HIP 500	09
• DELTAShield HIP 1000	10
• Cold Applied Polyurea Technology	
• DELTAShield PROSeal	11
• DELTAShield EasySeal 1K AL	12
• DELTAShield BituSeal	13
• Polyaspartic Technology	
• DELTAShield F 500	14
• DELTAShield C 1100	15





Introduction



DELTA Coatings International is a leading manufacturer of high performance, high quality Polyurea, Polyurethane and Polyaspartic liquid coating systems in the Middle East. DELTA Coatings combines the latest technologies to develop and self formulate superior products for extreme hot and humid climatic conditions. Our state of the art factory, located in Dubai Investment Park, accommodates an in house R & D laboratory and spray testing & training facility.

DELTA specializes in technically demanding applications because we are much more than just a product manufacturer. Our expertise extends beyond manufacturing products into:

- ✓ Detailed knowledge of application equipment
- ✓ Application processes & procedures
- ✓ Technical support services; before, during and after installation
- ✓ Project specific solutions



Our mission is to use our extensive experience and unique skill set to provide superior solutions for our customers in an honest and transparent fashion. A successful outcome for our customer is our only priority.



At DELTA Coatings, we pride ourselves in being more than just a supplier of a “product in a can”. Even the best products cannot perform properly if they are not applied correctly. DELTA’s extensive experience in the spray application equipment, product formulation and on-site delivery of the coating solution places DELTA in a unique position to offer superior technical advice starting with product selection and specification right through to on-site technical support.



DELTA has been the leading Graco HPCF spray equipment distributor in the Middle East since 2005. Our highly trained and experienced technicians provide equipment training and on-going support to our customers. DELTA maintains a large inventory of spare parts and consumables to ensure rapid turn-around of critical components.



DELTA’s staff includes some of the most experienced people in the industry who collectively bring many years of extensive experience in formulating and manufacturing coating products, spray equipment design and manufacture and very importantly on-site application experience.



DELTA Coatings offers you a complete turnkey solution for all your coating requirements



DELTAShield HP 400



DESCRIPTION

DELTAShield HP 400 is a 100% solid, instant curing, spray applied, plural component, seamless and flexible pure polyurea membrane. **DELTAShield HP 400** is specially formulated for high abrasion resistance and offers the best combination of elastomeric waterproofing, chemical resistance, corrosion protection, and abrasion resistance. **DELTAShield HP 400** can be applied horizontally, vertically and overhead; making it ideal for industrial applications with a variety of substrates and complex geometries.

TYPICAL USES

- Protection of concrete substrates
- Water and wastewater treatment plants
- Anti corrosion
- Chemical resistance
- Abrasion resistance
- Traffic and anti skid areas
- Material handling and storage

FEATURES

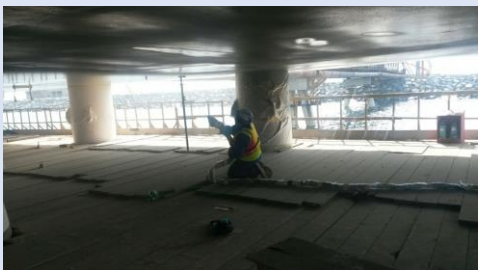
- Can be applied in hot, cold or humid
- Excellent abrasion, impact and chemical resistance
- Resistant to most chemicals, acids, oils, and bleaches
- Excellent tensile and elongation
- UV exposed applications
- Seamless application and finish
- Excellent adhesion to most substrates
- Remains flexible under a wide range of temperatures
- Fast cure and return to service
- Build any thickness in one go
- 100 % solids, VOC-free, contains zero solvents



“Heavy Duty Industrial Applications in various Industries; mining, wastewater ”



“Fast curing, Extremely tough & long lasting Pure Polyurea for Industrial Applications”





DELTAShield Hybrid 500

DESCRIPTION

DELTAShield Hybrid 500 is a spray applied, instant curing flexible membrane formulated from hybrid Polyurea technology, that can be built to any thickness in one application.

DELTAShield Hybrid 500 provides a very flexible, seamless, hard-wearing substrate waterproofing and substrate protection solution for a wide range of substrates. Its rapid spray application and instant curing characteristics enable shorter application times than traditional glue or weld in place and torch on membranes. Waterproofing integrity around difficult shapes and multiple substrate types is easily achieved with DELTAShield Hybrid 500 removing these application risks.

TYPICAL USES

- Large scale Waterproofing for Commercial, residential and basic waterproofing
- Waterproofing of high impact areas. – Plant rooms, trafficable roof decks
- Waterproofing for areas exposed to high wind abrasion
- Waterproofing of water features, pools and ponds
- Under concrete screed Waterproofing of large-scale podium decks
- Bridge, street, and tunnel construction Waterproofing
- Waterproofing and containment applications where high humidity and high levels of residual moisture are not factors to be considered during application
- Anti-root sub terrain Waterproofing of foundations
- Theming applications with Styrofoam and polyurethane molds
- Pontoons

FEATURES

- High Elongation property; +550 %
- Excellent cost to benefits ratio
- Extremely fast application time
- Tack free in seconds – walk on in minutes
- Rapid return to service saves time and money
- Seamless Waterproofing. No welding of joints – totally seamless.
- Conforms exactly to substrate shapes eliminating potential stress points when covering with final floor slabs or other toppings such as pavers.
- Excellent adhesion to most substrates; concrete, steel, aluminum, wood, foam.
- Can transgress multiple substrate types in one application
- Good tensile and structural strength
- No need to use protector boards when back filling
- 100% solids, VOC-free, Solvent free
- Good abrasion resistance
- Good impact resistance
- Excellent thermal stability



“Two component, spray applied, seamless, general-purpose protective Coating”





DELTAShield HP 500 PW

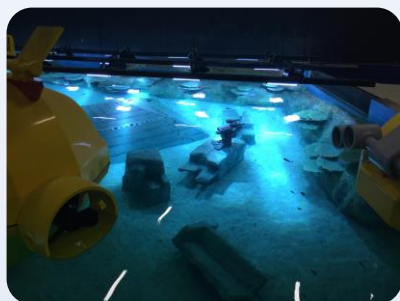
“WRAS & BS 6920 Approved Polyurea for large scale potable water applications”



DESCRIPTION

DELTA SHIELD HP 500 PW is an instant curing, spray applied, seamless, and flexible protective membrane that exhibits excellent impact and tear strength. It will not crack or peel even under the harshest conditions and requires no maintenance to maintain its integrity and physical features.

DELTA SHIELD HP 500 PW is specially formulated and is designed for use in potable water applications up to **85°C**.



TYPICAL USES

- Potable water reservoirs, canals, tanks.
- Rainwater storage tanks.
- Fish breeding tanks.
- De-salination plants.
- Water bottling and cleaning plants

FEATURES

- Potable Water Approved according to **BS 6920** and **WRAS Certification**.
- Spray applied Seamless application to any thickness in one application.
- Fast reactivity and tack free times - from 10 seconds.
- Fast return to service time – within 48 hours.
- Long life-cycle - significant whole of life cycle savings
- Excellent adhesion on concrete, steel, aluminum, fiberglass, foam etc.
- No sensitivity to humidity or moisture during the spraying and curing processes.
- High impact and abrasion resistance,
- Maintains flexibility and does not brittle over a wide temperature range.
- Very good tensile and structural strength – very high elongation at break.
- 100 % solids, VOC-free, no solvents.
- Does not contain catalysts.
- UV, chlorine and saltwater resistant.
- Suitable for exposed applications under water
- Can be applied across multiple substrates in the same application process
- Remains flexible under a wide range of climatic conditions





DELTAshield Aqualine AL

DESCRIPTION

DELTAshield Aqualine AL is a two component, spray applied, instant curing, high performance elastomeric waterproof membrane that can be built to any thickness in one application. It is ideal for swimming pools, lagoons and water bodies where the requirement of color stability is required in an elastomeric coating. **DELTAshield Aqualine AL** is UV and colour stable, suitable for pedestrian and vehicular traffic and can be installed with slip resistant surface profile options. **DELTAshield Aqualine AL** is specifically formulated for applications where the highest physical performance is required along with colour fastness to ensure functionality and aesthetics.

Specially formulated as

- A single product, one application, UV and colour stable, seamless waterproof membrane for pools, resort lagoons artificial beaches and all marine applications.

FEATURES

- Extremely fast spray applied installation speed.
- Instant curing – touch dry in 20 seconds.
- Two component, high performance membrane.
- Completely seamless, even across multiple substrates.
- Excellent adhesion to most common construction materials, concrete, render, steel, aluminium, concrete blocks.
- Resistant to most standard chemicals, salts acids, alkalis and fuel oils.
- Designed for extreme climates.
- 100% solids, VOC and solvent free.
- Very high impact resistance.
- Excellent crack bridging properties.
- Highly flexible, excellent elongation at break.
- High bond strength to suitably prepared substrates.
- Thermally stable, even at extreme temperatures.
- High tensile strength.
- No top coat required.
- Can be built with anti-skid properties



“One product, one application; Aliphatic, flexible and seamless waterproofing membrane”





DELTAshield PC 1200



DESCRIPTION

DELTAshield PC 1200 is a specially formulated high performance, steel pipe coating designed to provide superior corrosion, impact, abrasion and chemical resistance for both buried and above ground pipes. **DELTAshield PC 1200** is a rigid polymer and can be used for designed in-mould spray, mould manufacturing applications and the replacement of fiberglass reinforcing. **DELTAshield PC 1200** exhibits exceptional adhesion and low moisture permeability making it suitable for use in immersion applications. **DELTAshield PC 1200** is spray applied and is tack free in seconds providing very rapid turn around and handling times.

TYPICAL USES

- Suitable for Steel or GRP pipes
- External pipe coating for above or below ground pipelines including in aggressive wet soils
- Fabrication of parts traditionally made from Fiberglass
- In mold spraying of components
- Structural support of flexible wear linings
- Structural support of vacuum formed components

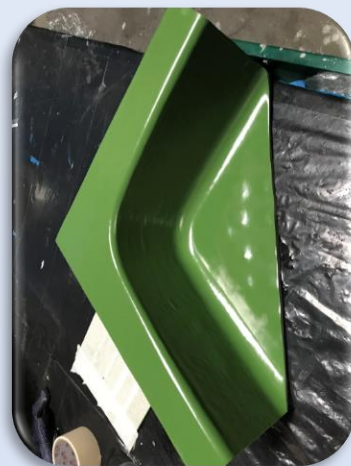
FEATURES

- Extremely fast application
- Fast cure resulting in reduced handling and re-use times
- Good abrasion resistance
- Direct adhesion, primer not required
- Very good impact resistance
- Excellent chemical resistance
- Very low moisture absorption
- Stable over a wide range of temperatures

✓ Hardness shore	75 D
✓ Elongation	8 %
✓ Tensile strength	45 Mpa



“High performance pipe and structural coating”





DELTAshield HIP 500

DESCRIPTION

DELTAshield HIP 500 is an instant curing, spray applied, seamless, and flexible high impact, highly abrasion resistant, protective coating specifically formulated to enhance military vehicles and equipment. **DELTAshield HIP 500** will not crack or peel and can withstand heavy impact and abrasion making it the ideal long-term military vehicle coating. **DELTAshield HIP 500** can be supplied in a range of base military colours and camouflage added later at the customer's request. **DELTAshield HIP 500** is easy to clean and requires no maintenance.

TYPICAL USES

- External body protection of military vehicles.
- Internal body protection of military vehicles.
- Easy to clean, hard wearing, slip resistant flooring for internal floors of military vehicles.
- Enhancement of composite ballistic panels.
- Protection of external body accessories – push bars, tow bars, side steps.
- Protection of fiberglass rear doors on both vehicles and aircraft.
- Abrasion and corrosion protection of tool boxes.

FEATURES

- Instant cure results in increased productivity at the manufacturing stage.
- Very high impact resistance.
- Excellent abrasion and scratch resistance.
- Resistant to most standard chemicals, acids, oils, and bleaches.
- Will not crack or peel.
- Can incorporate slip resistant surface finishes.
- Remains flexible and impact absorbing under a wide range of climatic conditions from very cold to very hot.
- Can be built to any thickness in one application. Does NOT require multiple coats
- 100 % solids, VOC-free, contains zero solvents

✓ Hardness shore	45 D
✓ Elongation	250 %
✓ Tensile strength	19 Mpa

“Two Component Spray Applied High Impact Protection”





DELTAshield HIP 1000



DESCRIPTION

DELTAshield HIP 1000 (High Impact Protection) is a premium, high performance elastomeric formulation designed to absorb blast shock waves and capture blast fragmentation and shrapnel. This unique formulation provides incredible strength and elongation properties far in excess of standard polyurethane lining systems. **DELTAshield HIP 1000** displays excellent elongation properties and very high tensile strength giving it the ability to “stretch” and absorb shock waves whilst still resisting rupturing.

TYPICAL USES

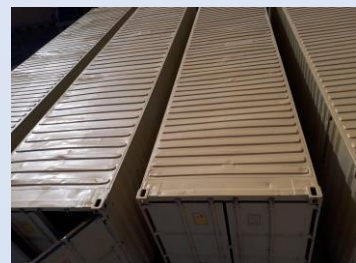
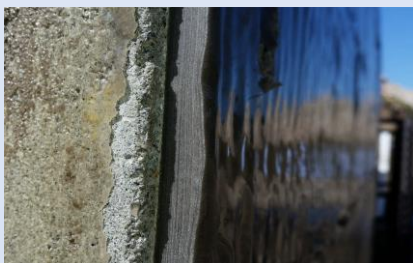
- Ammunition storage bunkers / containers.
- Parliament House and Political offices.
- Mobile Command and communication centers / structures.
- Mobile “in field” transportable accommodation buildings.
- Floors of personnel carriers
- Embassy buildings and perimeter security walls.
- Wastewater infrastructure and control centers.
- Critical power supply installations and distribution control centers.
- Fuel storage facilities.
- Court houses, prisons, public buildings, hotels with safety bunkers
- Private residences.
- Cash storage and transfer facilities

FEATURES

- Extremely high values for tensile strength even at high elongation levels.
- Very high Impact and abrasion resistance making it suitable for application in harsh environments.
- Extremely fast tack free times = Fast return to service.
- Maintenance free.
- Excellent adhesion to a wide variety of correctly prepared substrates.
- Resistant to most aggressive chemicals, solvents, acids and caustics.
- Can be applied in hot and humid conditions.
- Spray applied seamless application. No joins.
- Can be applied to any thickness in one application.
- 100% solids, VOC-free, solvents free.
- Excellent sound reduction properties.
- Excellent thermal stability -20C - +140C

✓ Hardness shore	45 D
✓ Elongation	350 %
✓ Tensile strength	35 Mpa

“Explosion & Blast Mitigation Protection; Saving Human Lives”





DELTAShield PROSeal

DESCRIPTION

DELTAShield PROSeal is a hand applied, **cold cured polyurea** waterproofing membrane with very rapid cure times and excellent elongation. DELTAShield PROSeal provides significant application advantages due to its speed of cure and hence rain resistance. It can be walked on in minutes eliminating physical damage risk from follow on trades or clean-up activities. DELTAShield PROSeal is a two component, moisture tolerant, easy to apply, flexible, seamless, waterproofing solution for a wide range of waterproofing applications. Its exceptional physical characteristics allow for very thin dry film thicknesses resulting in less material consumption than traditional 1K moisture cured polyurethanes. DELTAShield PROSeal does not require reinforcing mesh or any strengthening products decreasing application times and labour costs.

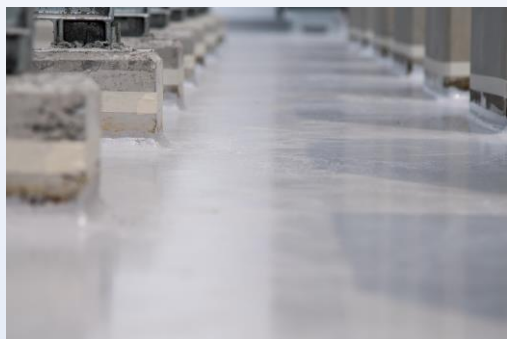
TYPICAL USES

- Waterproofing of roof tops, balconies, terraces and verandas
- Over coat reroofing of old bitumen felts, asphalt felts, EPDM, PVC membranes and acrylics.
- Exposed aluminum roofing for industrial applications
- General construction waterproofing.
- Waterproofing under plant and equipment on roof tops.
- Waterproofing of wet areas under tile applications.
- Repairing mechanical damages of Polyurea lining systems.

FEATURES

- Simple application – Squeegee / rake trowel, roller or brush
- Provides waterproofing properties within 30 minutes of application. Minimizes bad weather damage after application.
- Seamless membrane with zero welds, overlaps or joints.
- Cold applied and cold cured. No requirement for specialized application equipment.
- Can be applied over the top of old existing waterproofing systems.
- Conforms exactly to substrate shapes eliminating potential stress points when covering with final floor slabs or other toppings such as pavers.
- Excellent crack bridging properties.
- Excellent adhesion to nearly all substrates - concrete, steel, aluminum, wood, foam etc.
- Can transgress multiple substrate types in one application.
- Mechanical damage can be easily repaired.
- 100% solids, VOC-free, Solvent free
- Good abrasion resistance
- Good impact resistance
- Excellent thermal stability

✓ Hardness shore	75 A
✓ Elongation	600 %
✓ Tensile strength	6 MPa



“Simply mix, stir, pour and spread”





DELTAShield EASYSeal 1K AL

DESCRIPTION

DELTAShield EASYSeal 1K AL is an aliphatic single component hand applied, cold cured, waterborne polyurethane waterproofing membrane.

DELTAShield EASYSeal 1K AL dries to form a flexible, seamless, waterproofing solution for a wide range of exposed waterproofing applications.

DELTAShield EASYSeal 1K AL is weather and UV resistant and is non-yellowing providing excellent heat reflection properties and good colour stability.

TYPICAL USES

- Waterproofing of both flat and sloped roof tops.
- Waterproofing of balconies, terraces and verandas
- General construction waterproofing - exposed.
- Waterproofing under plant and equipment on roof tops.
- Sealing and protecting concrete substrates.
- Sealing and protection of polyurethane insulation foam.

FEATURES

- Simple application – Squeegee / rake trowel, roller or brush
- Provides waterproofing properties within 30 minutes of application. Minimizes bad weather damage after application.
- Seamless membrane with zero welds, overlaps or joints.
- Cold applied and cold cured. No requirement for specialized application equipment.
- Can be applied over the top of old existing waterproofing systems.
- Conforms exactly to substrate shapes eliminating potential stress points when covering with final floor slabs or other toppings such as pavers.
- Excellent crack bridging properties.
- Excellent adhesion to nearly all substrates - concrete, steel, aluminum, wood, foam etc.
- Can transgress multiple substrate types in one application.
- Mechanical damage can be easily repaired.
- 100% solids, VOC-free, Solvent free
- Good abrasion resistance
- Good impact resistance
- Excellent thermal stability

✓ Hardness shore	75 A
✓ Elongation	300 %
✓ Tensile strength	3 Mpa



“Single component, hand applied, Aliphatic waterproofing membrane”





DELTAshield BITUSeal 1K



DESCRIPTION

DELTAshield BITUSeal 1K is a moisture cured polyurethane & bitumen resin designed for waterproofing of substructure surfaces both horizontal and vertical.

DELTAshield BITUSeal 1K dries to form a flexible, seamless, rubber like waterproof membrane.

TYPICAL USES

- Waterproofing of building foundations and below ground walls such as basements and underground car parks.
- Waterproofing of planter boxes.
- Waterproofing of wet areas.

FEATURES

- Simple application – roller, brush or airless sprayer.
- Thixotropic makes it suitable for horizontal and vertical surfaces.
- Completely seamless membrane. Zero welds, overlaps or joins.
- Cold applied and cold cured. No requirement for specialized application equipment.
- Conforms exactly to substrate shapes.
- Excellent crack bridging properties.
- Resistant to root penetration.
- Excellent adhesion to concrete.
- Resistant to continuous water exposure.
- Fast curing.

“Single component, bitumen/polyurethane durable waterproofing membrane”





DELTAShield F500

DESCRIPTION

DELTAshield F 500 is a high performance, rapid curing, self levelling, high gloss flooring product based on the latest polyaspartic / polyurea technologies. **DELTAshield F 500** provides excellent colour and gloss retention and is resistant to most fuels, oils, solvents, and cleaners. **DELTAshield F 500** can be applied using an airless spray gun or rollers. With a tack free time of 60 minutes re-use times are incredibly short saving customers' costly down time. **DELTAshield F 500** can be pigmented and can incorporate colored flakes or aggregates. When applied clear **DELTAshield F 500** provides a superior anti-yellowing top-coat sealer.

TYPICAL USES

- As a seamless rapid application, 1 product, 1 application, commercial and Industrial flooring system
- Aircraft hangers
- Warehouse flooring
- Restaurants and kitchens
- Retail shops and shopping malls
- Hospital flooring
- Car park decks
- As a self-leveling, high gloss sealing coat for flake and quartz decorative flooring
- As a non-yellowing sealer for stone and timber
- As a refurbishment coat over old epoxy or polyurethane floors

FEATURES

- Extremely fast cure and re-use times
- Excellent colour and gloss retention
- Excellent self levelling characteristics.
- Cures to a very clear finish when not pigmented
- Excellent abrasion resistance
- Self-priming
- Excellent adhesion to concrete substrates
- Excellent chemical resistance
- Resistant to most chemicals, solvents, acids and caustics
- Can be used for indoor and outdoor applications
- Stable over a wide temperature range
- Displays good flexibility and impact resistance compared to standard epoxies.
- UV Stable in clear or pigmented form.

✓ Hardness shore	75 D
✓ Elongation	20 %
✓ Tensile strength	16 MPa



“High gloss, fast curing polyaspartic flooring system; extremely hard and durable”





DELTAshield C 1100

DESCRIPTION

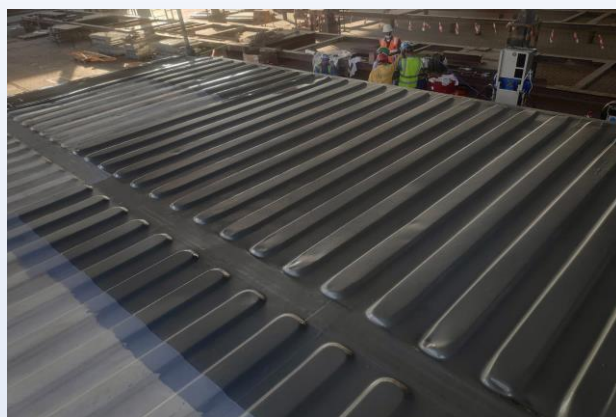
DELTAshield C 1100 is a new technology high performance, rapid curing colour fast and non-yellowing waterproofing & corrosion protection coating. **DELTAshield C 1100** can provide significant savings in application and re-use times due to it being a one application, rapid curing product. There is no need for a topcoat due to **DELTAshield C 1100** excellent colour and gloss retention even under harsh UV exposure. **DELTAshield C 1100** displays excellent chemical resistance and is resistant to most fuels, oils, solvents and cleaners making it an ideal solution for plant and equipment corrosion protection. **DELTAshield C 1100** can be applied using an airless sprayer or rollers. With a tack free time of 45 minutes re-use times are incredibly short saving customers costly down time.

TYPICAL USES

- Steel corrosion protection replacing multi layered multi product systems
- Concrete façade protection system.
- Protection of concrete bridge structures
- Earthmoving equipment
- Tanks – Internal and external
- Water features & swimming pools as a water proof protective coating
- Pipe coatings - external
- External coating of bulk rail wagons
- Industrial plant coatings.
- External protection of bins, hoppers, silos.
- Can be applied as a UV and color stable top coat on top of any DELTAshield range of polyurea systems.

FEATURES

- One product, one application.
- Extremely fast cure and re-use times
- Excellent colour and gloss retention. Does not yellow under UV light
- Excellent abrasion resistance
- Excellent chemical resistance
- Very good flexibility – reduces impact damage.
- Resistant to most fuels, oils, solvents, acids and caustics
- Can be used for indoor and outdoor applications
- Suitable for vertical and horizontal applications.
- Displays good flexibility and impact resistance compared to standard epoxies.
- Provides high performance corrosion protection with colour and gloss stability in one rapid curing, flexible product.



“High Performance, High Gloss, Rapid Curing Polyaspartic Technology”





DELTA

COATINGS INTERNATIONAL

Liquid Applied Coatings Made Simple

Polyurea • Polyaspartic • Polyurethane



Address:
P.O. Box 123395, Dubai Investment Park II, Dubai, UAE Tel: +971 4 8856402

www.deltacoatings.com
info@deltacoatings.com